

Volkswagen Golf Estate Mk 7 2013 on

Our ref: H0583

PACKING REQUIREMENTS



BOOTLINER

Min x 15 ref: 113



REF: 113



REAR DOOR COVER

Minimum of 18 Self-adhesive loop
fastener tabs



*Photo: Rear Plus WITH Seat Split, prepared for
additional Bumper Flap*

PREPARATION

- Remove the load cover. It may be replaced later.
- Unfold the Hatchbag and place in the vehicle. The panel with the Hatchbag label sits against the back of the rear seat.

*Please note not all of the photographs are specific to your
vehicle*

BASE

-
- Position the central base panel snugly into place. Start at the tailgate end.
- The hook fastener sewn / welded to the reverse face of the liner will attach directly to the carpet.



FITTING FRONT

- Hook & loop fastener straps align to headrests.
- Pass around each post and fasten back onto themselves.



REAR PLUS VERSIONS

- **YOU MUST UNFASTEN THE HEADREST STRAPS BEFORE YOU RECLINE THE REAR SEAT UPPERS (Please refer to REAR PLUS options on website to see detailed photo')**

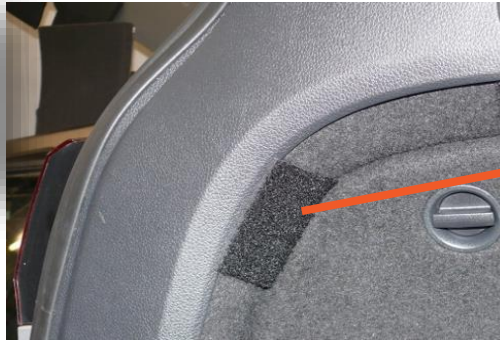
SIDES

- The hook fasteners welded to the reverse face of the liner will attach directly to the carpet panels

*HOWEVER, we feel the attachment of the tabs ref: 113 in the area highlighted in **photo A** will dramatically improve the fixing of the Boot Liner.*



REF: 113



REF: 113 FIXING

- Placing the side up to the vehicle, locate each position of the hook fastener tabs welded to the liner. In each of these locations fasten one of the REF: 113 tabs to the carpet.

You can trim these tabs to suit the available carpet at each location, or feed part of the tab up behind the plastic.

- Once these REF: 131 tabs are attached, you will not need to remove them. The boot liner will fasten to them.
- When removing the Boot Liner - just carefully peel away from the tab leaving them fixed to the carpet.

OPTIONAL EXTRAS

BUMPER FLAP

- Fit Bootliner
- Attach the Bumper Flap to the loop fastener strip that has been manufactured into the base of the boot liner.
- The Bumper Flap either folds into the vehicle OR can be detached and stored elsewhere when you close the tailgate.
- Please note that the edges of the fabric are not bound so that any mud, dirt or water can run off.



Please note the following photos are non-specific to your vehicle

SEAT FLAP

- The Seat flap is designed to protect the top of your rear seat giving additional protection from drooling dogs etc.
- The Seat Flap can also be used in conjunction with the **Rear Plus** Option(s). With the rear seats in the folded position the Seat Flap extends the coverage over any exposed section of the seat backs and the headrests
- Attach the Seat Flap to the loop fastener strip that has been manufactured into the Boot Liner just below the top of the rear seats.
- The flap is then placed over the rear head rests and down the back of the passenger seats.
- If the Seat Flap sits over large headrests and obstructs your rear view: carefully create openings in the flap to accommodate the headrest posts.



VERY IMPORTANT PREPARATION

Tailgate Cover ONLY

To ensure a good bond, when using the self-adhesive hook & loop fasteners to attach the Bootliner to the plastic / metal trim (**Not** the carpet); it is most important to remove silicone film from the vehicle trim. Silicone is applied during manufacture and can also be found in many valeting products. It is **highly likely there will be a build-up of silicone**. Before applying any fastener pads, the surface **MUST be thoroughly cleaned** using a silicone remover. (The hook & loop fasteners cannot be used once it has been in contact with silicone). We recommend "Intensive Tar Remover" made by AutoGlym and available from Halfords. Wipe off thoroughly **any residue with a separate clean dry cloth**.

Unfortunately we are unable to supply this product, as it cannot be transported via our postal carrier.

NOTE: the adhesive takes 24hrs to reach full adhesion – do not disturb during.



TAILGATE COVER

Please ensure that you clean the plastics as instructed before using self-adhesive loop fasteners

- Use the self-adhesive loop fastener tabs to attach the cover to the plastic trim.
- Place two loop fastener tabs on the recessed lip to pull the body of the tailgate cover in tight to the profile.

